

VISITOR GUIDE

St. Luke's Campus



X = Emergency Call Box

St. Luke's Campus Parking Lots



We are a smoke-free campus.
Please no smoking.

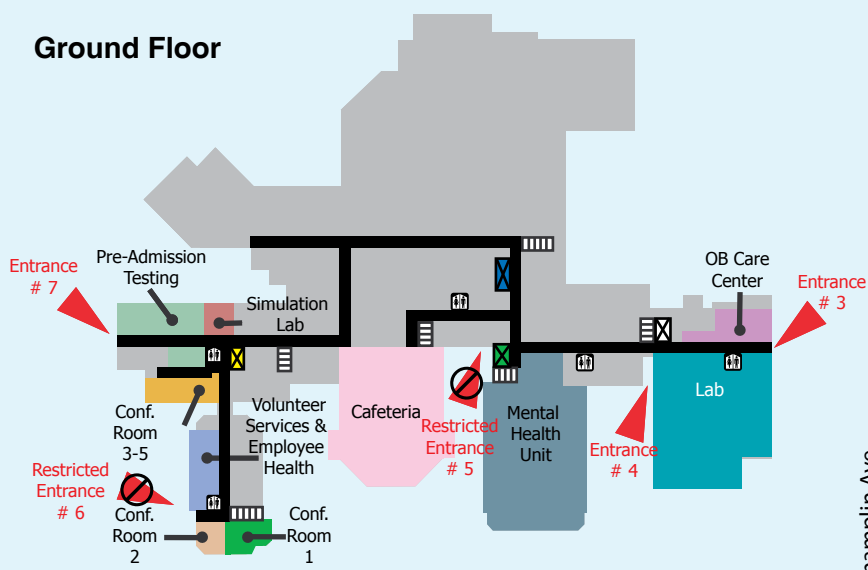


1656 CHAMPLIN AVENUE, UTICA, NY
315-624-6000

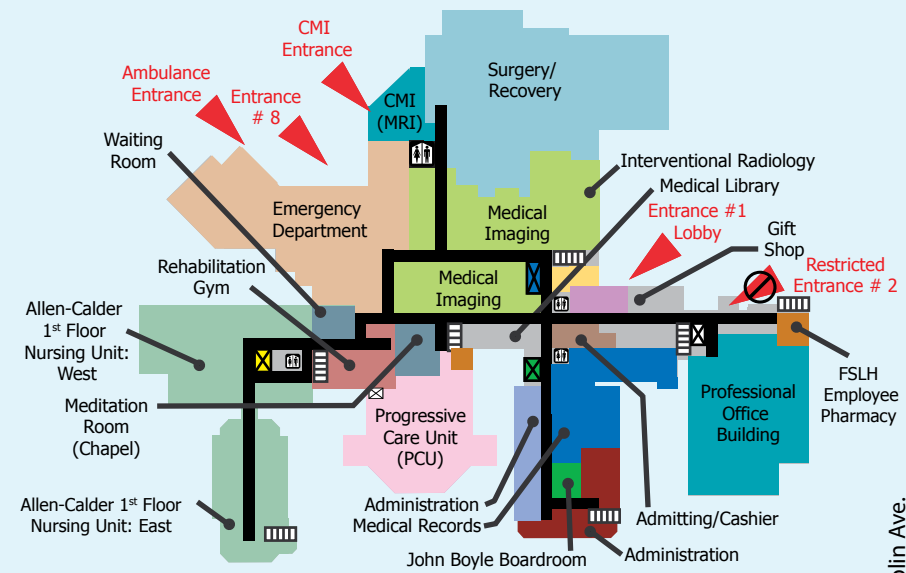
WWW.MVHEALTHSYSTEM.ORG

Utica College

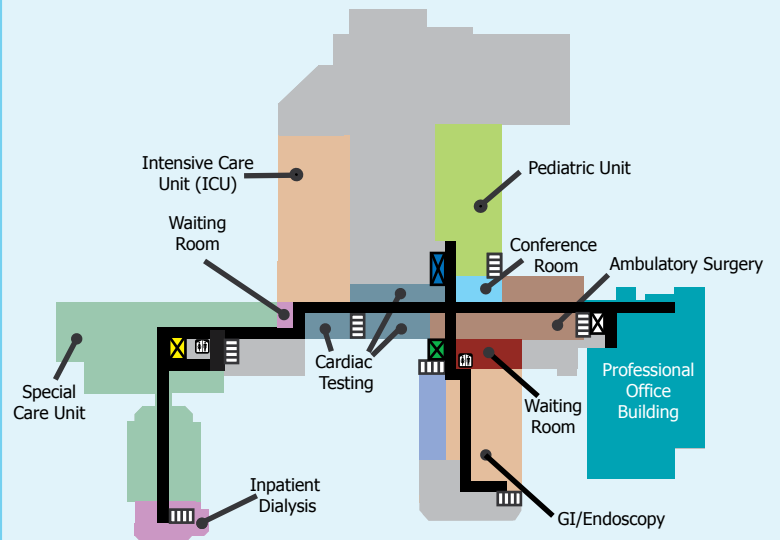
Ground Floor



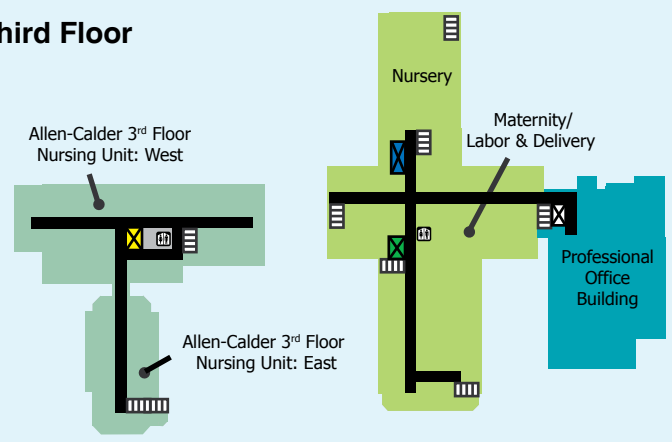
First Floor



Second Floor



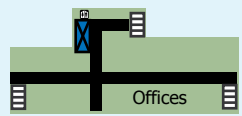
Third Floor



ST. LUKE'S CAMPUS

- Restrooms
- Elevators
- Stairs
- Entrance
- Restricted Entrances (Employee/Medical Staff Only)

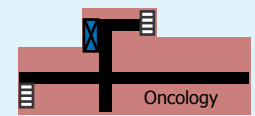
Fourth Floor



Fifth Floor



Sixth Floor



| Area | Floor |
|-------------------------------------|--------|
| Administration | 1 |
| Admitting | 1 |
| Allen-Calder 1st Floor Nursing Unit | 1 |
| Allen-Calder 2nd Floor Nursing Unit | 2 |
| Allen-Calder 3rd Floor Nursing Unit | 3 |
| Ambulatory Surgery | 2 |
| Cafeteria | Ground |
| Cardiac Testing | 2 |
| Cashier | 1 |
| Chapel (Meditation Room) | 1 |

| Area | Floor |
|------------------------------|--------|
| CMI (MRI) | 1 |
| Conference Room - 2nd Floor | 2 |
| Conference Rooms 1-5 | Ground |
| Emergency Department | 1 |
| Employee Health | Ground |
| Fifth Floor Medical/Surgical | 5 |
| GI/Endoscopy | 2 |
| Gift Shop | 1 |
| Inpatient Dialysis | 2 |
| Intensive Care Unit (ICU) | 2 |

| Area | Floor |
|----------------------------|--------|
| Interventional Radiology | 1 |
| John Boyle Boardroom | 1 |
| Lab | Ground |
| Lobby | 1 |
| Maternity/Labor & Delivery | 3 |
| Medical Imaging | 1 |
| Medical Library | 1 |
| Medical Records (HIM) | 1 |
| Mental Health Unit | Ground |
| Nursery | 3 |

| Area | Floor |
|-----------------------------|--------|
| OB Care Center | Ground |
| Oncology Nursing Unit | 6 |
| Pediatric Unit | 2 |
| Pre-Admission Testing | G |
| Progressive Care Unit (PCU) | 1 |
| Rehabilitation Gym | 1 |
| Simulation Lab | Ground |
| Surgery/Recovery | 1 |
| Special Care Unit (SCU) | 2 |
| Volunteer Services | Ground |